

THE NEW CONTOUR

BENEFIT COSMETICS MAKEUP MASTER JOSÉ RIVERA GUIDES US THROUGH EYE AND LIP DETAILING

BY NYKIA SPRADLEY

Overly sculpted cheeks are so 2015. “There has been a craze around contouring—and there have been several failed attempts at contouring new places,” says José Rivera. (Yes, butt and earlobe contouring were really a thing!) “The idea of making your eyes and lips bigger can be enticing.” What once took an arsenal of brushes and products is now achievable in moments, he says. Here’s how to do it right.

BENEFIT COSMETICS They’re Real! Double the Lip in Flame Game (\$29 for set of four, benefitcosmetics.com) and Ka-Brow! Eyebrow Cream-Gel in 05 Deep (\$24, Sephora). **IT COSMETICS** Brow Power Super Skinny Pencil in Universal Dark Brown (\$24, itcosmetics.com).



THE STEPS: HOW TO GET THE LOOK

EYES



1 **“Top-line” the brow:** With a pencil or powder in a medium to dark brown shade, draw along the top of the brow to establish the shape and frame the eye. Starting on top produces a sexier curve than filling from the bottom.



2 **Fill from the top down:** Blend from the top line down toward the baseline of the brow using a second shade that is lighter and cooler. Going dark to light from top to bottom delivers a contoured effect.



3 **Enhance with a highlighter:** Define the baseline of the brow by adding a subtle glow with a highlighter just under the arch. This creates a contrast while further graduating the color of the brow toward the eye.



4 **Double up on shadow:** Using an eye shadow duo in mono tones (one dark, one light), swipe the darker shade on top. Where the lighter shade elongates and accentuates, dark colors do the opposite.

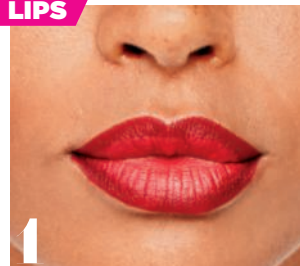


5 **Line and blend:** With an eye pencil, trace a thin line above the upper lash line to shape the eye. Then blend to soften the look (think smoky eye) so you don’t take away from the structure of the brow.



6 **Define lashes:** Apply mascara over the top of the lashes, then go back and apply from underneath. “Top-loading” the lashes allows for the max amount of product in the least amount of time.

LIPS



1 **Outline and fill:** To make lips look fuller, first determine the shape by outlining with a shade that’s darker than the primary color you will be using. Then apply the lipstick to the center only.



2 **Blend lightly:** Press lips together to combine. The lighter tinge in the center and a slightly darker perimeter will give your kisser a more pronounced appearance.

MODEL PHOTOGRAPHY: TAKAHIRO OGAWA; HAIR: STACEY GIGERON/KENBARBOZA.COM; MAKEUP: JOSÉ RIVERA/BENEFIT COSMETICS; STILLS: JON PATERSON; PROP STYLIST: CHANEL KENNEDREW.